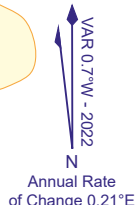
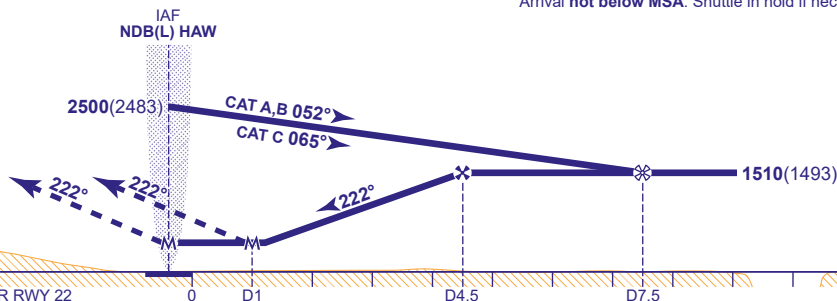


LOC/DME/NDB(L)
RWY 22
(ACFT CAT A,B,C)



Arrival not below MSA. Shuttle in hold if necessary.

MAPt 1 WITH DME I-HDN DME 1
MAPt 2 NO RANGE NDB(L) HAW
Climb straight ahead to 2500 , then turn right to NDB(L) HAW at 2500 or as directed.



Aircraft Category			A	B	C	Rate of descent	G/S KT	160	140	120	100	80
OCA (OCH)	No DME radar range only	2.5% Climb	680(663)	680(663)	680(663)		FT/MIN	860	750	640	530	430
		3% Climb	560(543)	560(543)	560(543)							
		4% Climb	450(433)	450(433)	450(433)							
	With DME 2.5% Climb	450(433)	450(433)	450(433)								
	No DME or radar range	830(813)	830(813)	830(813)								
VM(C)OCA (OCH AAL)	Total Area		800(755)	900(855)								
	East of 75°E		700(655)	800(755)	1500(1455)							

AIRCRAFT UNABLE TO RECEIVE RANGE INFORMATION
CAT A fly outbound for 3 MIN, CAT B 2.5 MIN and CAT C 2 MIN.

AD 2-EGNR-8-6